



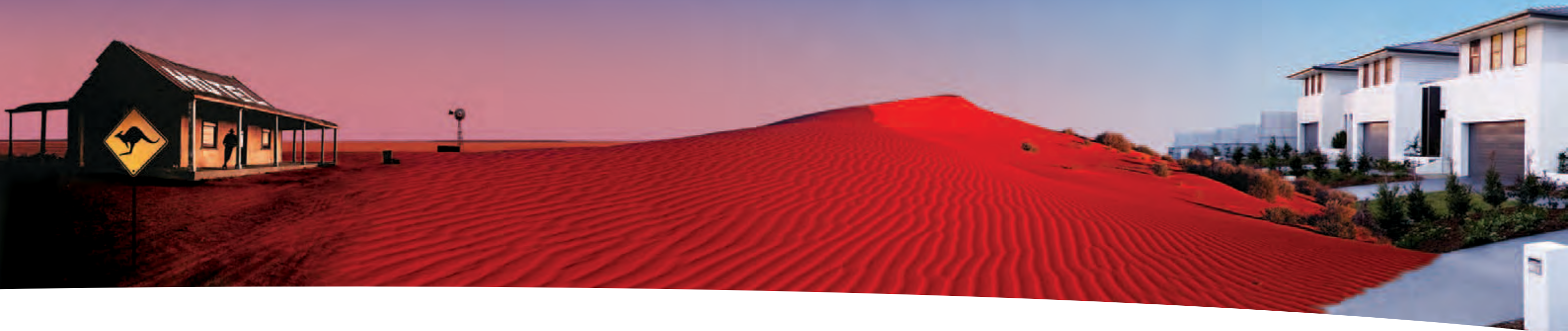
# ADD-ON AIR CONDITIONING

CHANGING THE GAME  
FOR COMFORT AND PERFORMANCE



**ActronAir**<sup>®</sup>  
Australian for air conditioning<sup>™</sup>

# At ActronAir, we see air conditioning differently.



## Add-on air conditioning

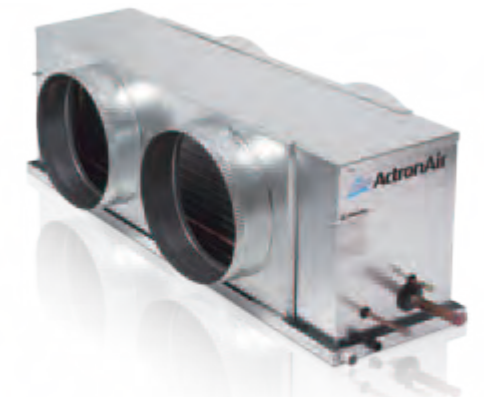
The leading Australian owned air conditioning brand, ActronAir is passionate about designing and engineering the most comfortable air conditioners in the world.

When you live in one of the harshest climates on earth, you need a system that's built to handle it.

ActronAir Add-on air conditioning is engineered to operate at temperatures up to 50°C.

That's why you can rely on an ActronAir system to continue performing even on the hottest summer days.

ActronAir. It's Australian for air conditioning.



# Add-on air conditioning.

Make Summer more bearable.

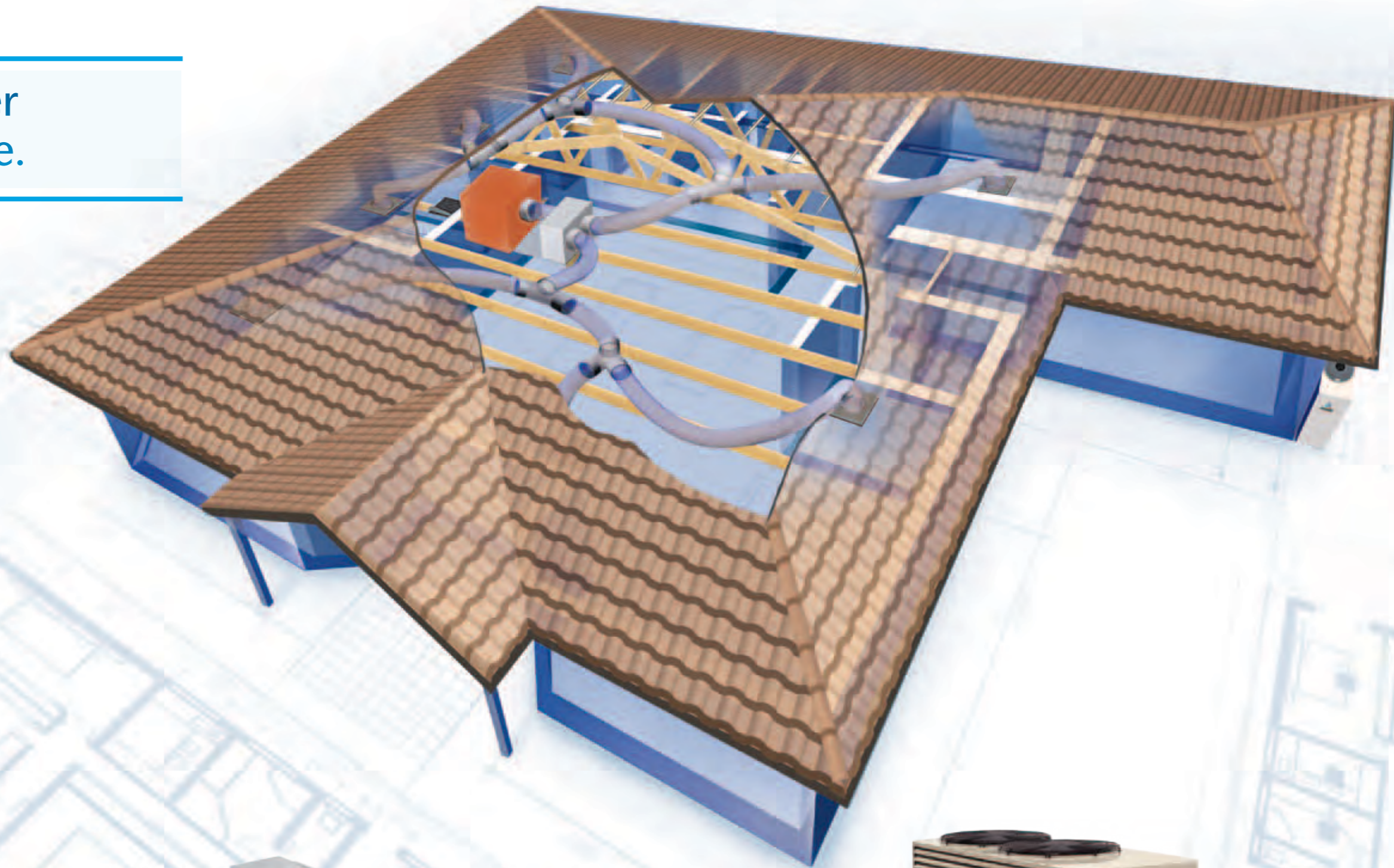
Every home and office is different and choosing an air conditioner isn't a decision to be taken lightly. That's because factors like the size of your house, how many rooms it has, or whether it's one or multi-storey, are just a few of the variables that can impact an air conditioner's efficiency and running costs.

If your home has existing gas ducted heating, you may be able to utilise your existing ductwork and upgrade with Add-on air conditioning.

Add-on air conditioning works quietly to remove heat and humidity from your home or office.

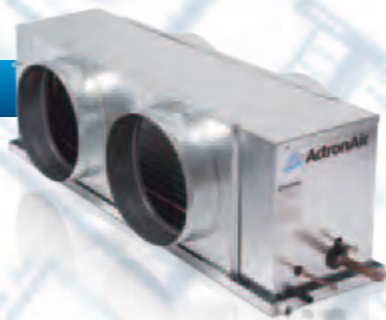
Aesthetically pleasing, the Add-on air conditioning system can even utilise the same registers as your gas ducted system to provide thermostatically controlled refrigerated cooling.

When you choose the comfort of an ActronAir Add-on air conditioning system, you have peace of mind in reliability and performance, keeping you cool all summer.



## Indoor Unit

The indoor unit connects to the gas ducted system to deliver thermostatically controlled refrigerated cooling



## Australian Designed Technology

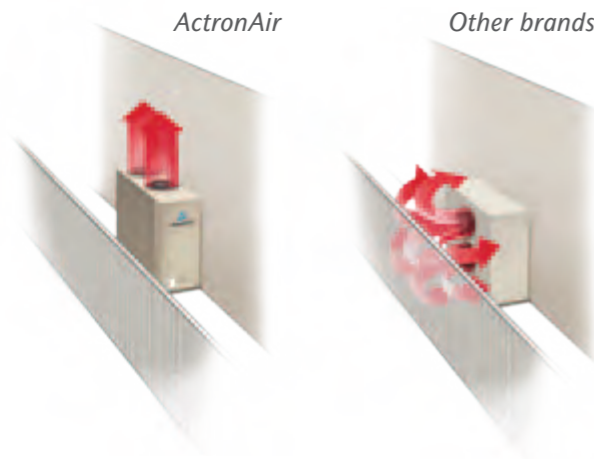
ActronAir's Add-on air conditioning uses Australian designed technology to cool your whole house, or just a few zones.



# The outdoor unit looks different - because it is!

## Vertical discharge

- Releases hot air upwards for improved air circulation around the outdoor unit
- Results in improved performance, especially on hot days



## Louved coil guard

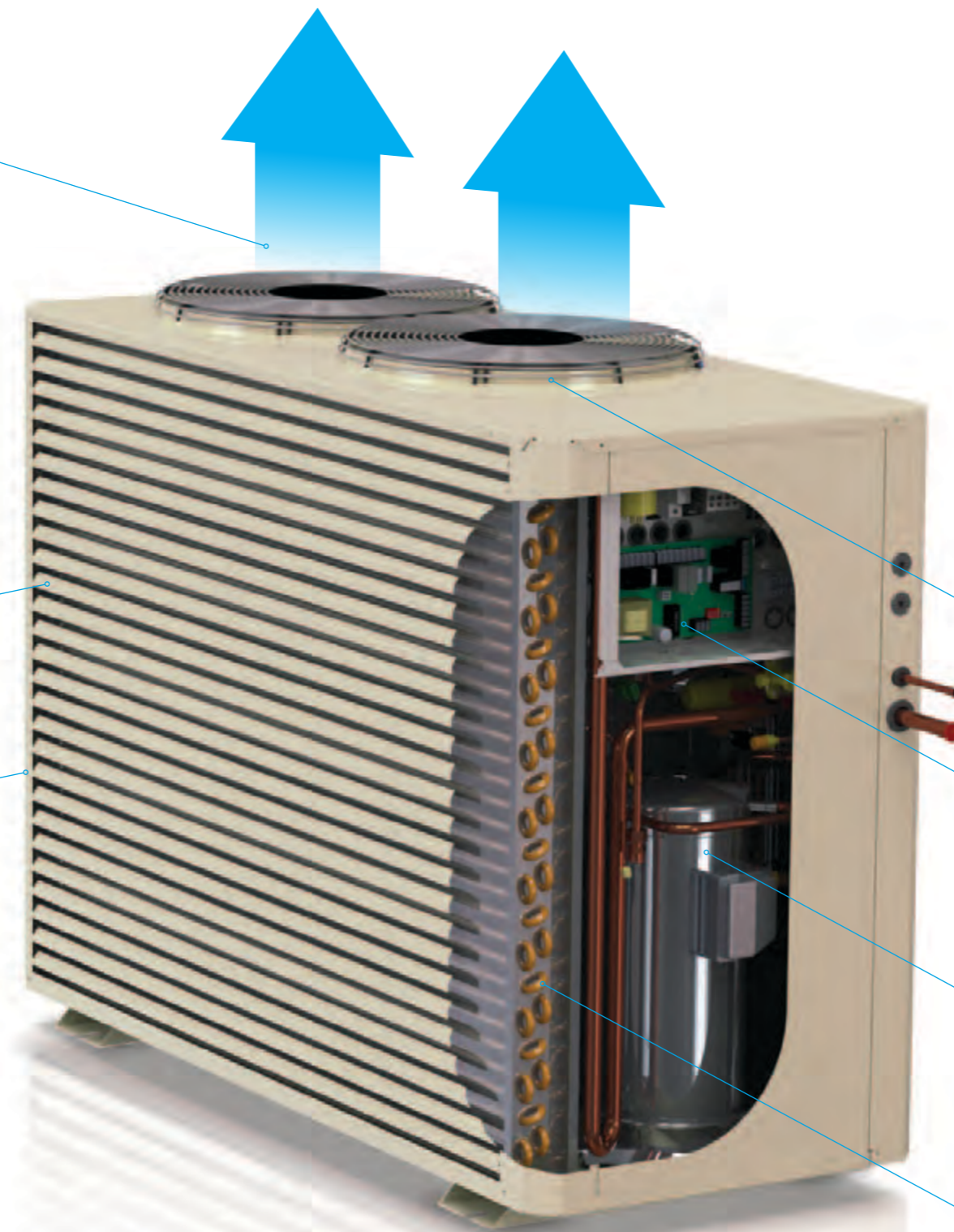
- Protection from the elements
- Engineered for better airflow around the heat exchanger

## Powder coating

- Engineered to withstand 1000 hours salt spray exposure as per AS/NZS4506: 2005

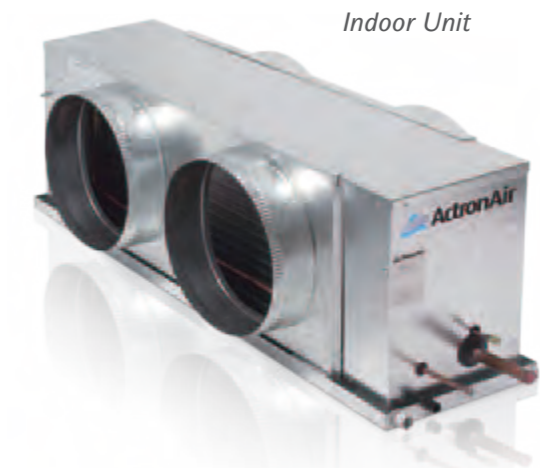
## Superior operating range

- Engineered to operate up to 50°C
- Tested to exceed Australian standards T3 AS/NZS3823 for 52° conditions



## Indoor coil unit

- Durable galvanised steel construction
- Integral fan coil safety tray for added protection
- Various duct adaptor kits available to suit most duct works



## High efficiency outdoor fans

- Superior performance
- Reduced noise

## ActronControls smart logic platform

- Fully integrated electronics and control platform electronics ensures the entire system works seamlessly with your gas ducted system

## Scroll compressor technology

- Delivers faster cooling
- Improved reliability
- Long lasting operation

## High performance heat exchangers

- Optimised refrigeration circuit
- Enhanced rifle bore tube
- Blue fin epoxy coated coil coating protection to condenser

Outdoor Unit

Indoor Unit

# Add-on air conditioning. Comfort you can depend on.



ActronAir is an Australian owned and managed company. So you'll never have to look far for spare parts or product support.

Furthermore, the ActronAir National Service Network is always available to provide quick and reliable service where and when it's needed.

A substantial 5-year residential warranty provides even more peace of mind.

## Insist on an ActronAir Specialist.

Every home is different, and your ActronAir Specialist will advise you on the best configuration to suit your lifestyle.

An ActronAir Specialist is also qualified to install your air conditioning system quickly and safely and provide the best ongoing service should you need maintenance, spare parts or advice.

## Insist on ActronAir Genuine Parts.

Your ActronAir Specialist can provide you with genuine ActronAir parts and accessories for peace of mind and years of trouble free options.





## Add-on air conditioning (Single Phase)

Technical Information				
		Single Phase		
OUTDOOR MODEL		SRC131C	SRC151C	SRC171C
INDOOR MODEL		SRA131A	SRA151A	SRA171A
<sup>1</sup> Nominal Capacity (kW)	(low/med/high)	12.28/12.33/12.82	14.94/15.36/15.78	16.65/16.96/17.49
<sup>1</sup> Nominal Input Power	(low/med/high)	3.21/3.22/3.23	4.00/4.02/4.04	4.55/4.57/4.59
<sup>1</sup> Nominal EER	(low/med/high)	3.82/3.83/3.97	3.74/3.82/3.91	3.66/3.71/3.81
Nett Capacity (kW)	(low/med/high)	12.15/12.20 <sup>(2)</sup> /12.65	14.80 <sup>(2)</sup> /15.20/15.60	16.50 <sup>(2)</sup> /16.80/17.30
Nett Input Power (kW)	(low/med/high)	3.34/3.35 <sup>(2)</sup> /3.40	4.14 <sup>(2)</sup> /4.18/4.22	4.70 <sup>(2)</sup> /4.73/4.77
<sup>2</sup> Nett EER	(low/med/high)	3.64/3.64/3.72	3.57/3.64/3.70	3.51/3.55/3.63
Airflow Indoor (l/s)	(low/med/high)	590/640/850	690/810/950	765/840/980
Coil Static Pressure Drop (Wet/Dry) Pa		100/71	77/55	102/73
Power Supply - (V/Ph/Hz)		230V / 1Ph+N / 50Hz		
Outdoor Unit Rated Amps (AS/NZS3823.1.2)		14.4	14.4	20.2
Outdoor Unit Full Load Amps (AS/NZS3823.1.2)		23.1	23.9	30.7
<sup>3</sup> Circuit Breaker Amps (Suggested)		32.0	32.0	40.0
IP Rating	Outdoor Unit	IP44		
Compressor	Type/No. per Unit	Compliant Scroll / 1		
	Starting Method	Soft Starter		
No. of refrigeration Circuits/No of capacity stages (Capacity range)		1/1 (100% capacity)		
Refrigerant		R410a		
Fans (Type x Number per unit)	Outdoor	Axial / 6 Pole External Rotor / Direct Drive x 2		
Outdoor Dimensions (mm)	Depth	580	580	580
	Height	990	990	1045
	Width	1320	1320	1460
Indoor Dimensions (mm)	Depth	340	340	340
	Height	412	412	412
	Width	1050	1250	1250
<sup>4</sup> Nominal Weight (kgs)	Outdoor	135	136	176
	Indoor	27	30	32
Field Pipe Size	Maximum Field Pipe Length Range - (m)	0 - 60	0 - 60	0 - 60
	Liquid Pipe - mm (inch)	9.52 (3/8)	9.52 (3/8)	9.52 (3/8)
	Gas Pipe - mm (inch)	19.05 (3/4)	19.05 (3/4)	19.05 (3/4)
<sup>5</sup> Sound Pressure Level (dBA)	Outdoor (low/high fan)	50 / 52	50 / 52	52 / 54
<sup>6</sup> Sound Power Level (dBA)	Outdoor (low/high fan)	67 / 69	67 / 69	69 / 71
MEPS Certified		Yes	Yes	Yes

Control Features				
Home Automation / Remote ON / OFF Capability		Yes	Yes	Yes
Manual Inputs Capable for Third Party Control		Yes	Yes	Yes
24V Relay		Yes	Yes	Yes

\* For more information refer to Controls and Accessories section.  
1-7 Please see product foot notes below.

### Foot Notes 0-7

- Nominal Capacity = Unit kW rating excluding indoor fan kW.  
Nominal Input Power = Input Power of the system less Indoor Fan Power.  
Nominal EER = Nominal Capacity / Nominal Input Power.
- EER Rated = Energy Efficiency Ratio  
(Rated Capacity Cooling / Rated Input Cooling).
- Recommended circuit breaker size. This should be used as a guide only. Refer to AS/NZS 3000 "Australian/New Zealand Wiring Rules" for more details.
- Refer to Catalogue Unit Weight Distribution Guide section for details of weight points.
- Sound Pressure Level at 3m distance is determined as the measured sound pressure at 3m perpendicular to the coil side of the condenser.

- Determination of Sound Power Levels of Noise Sources, AS1217.2 - Precision Methods for Broad-Band Sources in Reverberation Rooms.
- For short pipe run of 0-20m or average 1-storey residential dwellings, 19.05mm (3/4") Gas Field Pipe may be used in place of the recommended 22.22mm (7/8") gas pipe. Please refer to Capacity Selection Data & see Pipe Length Correction Multiplier for the drop in refrigeration capacity as a consequence of change in Gas Field Pipe diameter. Swaged end of Indoor and Outdoor Units' gas pipe to be cut in the field to fit ID into 19.05mm (3/4") replacement Field Pipe.

### Important Notes:

- The Local Electricity Supply Authority may require limits on - starting current, running current and voltage drop, please check prior to purchase.
- When the outdoor temperature exceeds the rated conditions, the cooling capacities may decrease the rated nett values.
- Specifications subject to change without notice.

### Rated Conditions:

35°C DB Outdoor / Air Entering  
Indoor 27°C DB, 19°C WB

### Warranty:

For full terms and conditions of ActronAir warranty, please refer to warranty terms document, visit:  
[www.actronair.com.au](http://www.actronair.com.au)



## Add-on air conditioning (Three Phase)

Technical Information						
		Three Phase				
OUTDOOR MODEL		SRC133C	SRC153C	SRC173C	SRC203C	SRC233C
INDOOR MODEL		SRA131A	SRA151A	SRA171A	SRA201A	SRA231A
<sup>1</sup> Nominal Capacity (kW)	(low/med/high)	12.12/12.33/12.92	14.33/14.66/15.08	16.85/17.26/17.68	18.77/19.09/19.70	22.28/22.22/23.89
<sup>1</sup> Nominal Input Power	(low/med/high)	3.03/3.04/3.07	3.85/3.86/3.87	4.37/4.44/4.49	5.25/5.26/5.27	5.95/6.00/6.03
<sup>1</sup> Nominal EER	(low/med/high)	4.00/4.06/4.21	3.72/3.80/3.90	3.86/3.89/3.94	3.58/3.63/3.74	3.74/3.87/3.96
Nett Capacity (kW)	(low/med/high)	12.20/12.20 <sup>(2)</sup> /12.75	14.20/14.50 <sup>(2)</sup> /14.90	16.70 <sup>(2)</sup> /17.10/17.50	18.60 <sup>(2)</sup> /18.90/19.50	22.10 <sup>(2)</sup> /23.00/23.65
Nett Input Power (kW)	(low/med/high)	3.15/3.17 <sup>(2)</sup> /3.23	3.98/4.02 <sup>(2)</sup> /4.05	4.52 <sup>(2)</sup> /4.61/4.67	5.42 <sup>(2)</sup> /5.45/5.47	6.14 <sup>(2)</sup> /6.21/6.28
<sup>2</sup> Nett EER	(low/med/high)	3.81/3.85/3.95	3.57/3.61/3.68	3.69/3.71/3.75	3.43/3.47/3.56	3.60/3.70/3.77
Airflow Indoor (l/s)	(low/med/high)	590/640/850	690/810/950	765/840/980	900/985/1120	980/1200/1400
Coil Static Pressure Drop (Wet/Dry) Pa		100/71	95/68	102/73	102/73	105/74
Power Supply - (V/Ph/Hz)		400V / 3Ph+N / 50Hz				
Outdoor Unit Rated Amps (AS/NZS3823.1.2)		6.2	7.2	8.6	10.4	12.0
Outdoor Unit Full Load Amps (AS/NZS3823.1.2)		8.3	11.7	12.3	13.9	15.9
<sup>3</sup> Circuit Breaker Amps (Suggested)		16.0	20.0	20.0	20.0	25.0
IP Rating	Outdoor Unit	IP44				
Compressor	Type/No. per Unit	Compliant Scroll / 1				
	Starting Method	D.O.L.				
No. of refrigeration Circuits/No of capacity stages (Capacity range)		1/1 (100% capacity)				
Refrigerant		R410a				
Fans (Type x Number per unit)	Outdoor	Axial / 6 Pole External Rotor / Direct Drive x 2				
Outdoor Dimensions (mm)	Depth	580	580	580	580	685
	Height	990	990	1045	1045	1105
	Width	1320	1320	1460	1460	1685
Indoor Dimensions (mm)	Depth	340	340	340	340	340
	Height	412	412	412	435	485
	Width	1050	1250	1250	1355	1405
<sup>4</sup> Nominal Weight (kgs)	Outdoor	133	135	174	185	200
	Indoor	27	30	32	38	41
Field Pipe Size	Maximum Field Pipe Length Range - (m)	0 - 60	0 - 60	0 - 60	0 - 20	0 - 60
	Liquid Pipe - mm (inch)	9.52 (3/8)	9.52 (3/8)	9.52 (3/8)	9.52 (3/8)	12.70 (1/2)
	Gas Pipe - mm (inch)	19.05 (3/4)	19.05 (3/4)	19.05 (3/4)	22.22 (7/8)	22.22 (7/8)
<sup>5</sup> Sound Pressure Level (dBA)	Outdoor (low/high fan)	50 / 52	50 / 52	52 / 54	52 / 54	54 / 58
<sup>6</sup> Sound Power Level (dBA)	Outdoor (low/high fan)	67 / 69	67 / 69	69 / 71	69 / 71	71 / 75
MEPS Certified		Yes	Yes	Yes	Yes	Yes

Control Features						
Home Automation / Remote ON / OFF Capability		Yes	Yes	Yes	Yes	Yes
Manual Inputs Capable for Third Party Control		Yes	Yes	Yes	Yes	Yes
24V Relay		Yes	Yes	Yes	Yes	Yes

\* For more information refer to Controls and Accessories section.  
1-7 Please see product foot notes on page 10.





**ActronAir<sup>®</sup>**

Australian for air conditioning™

General Enquiries  
[www.actronair.com.au](http://www.actronair.com.au)  
1300 522 722